

BACKYARD BLITZ

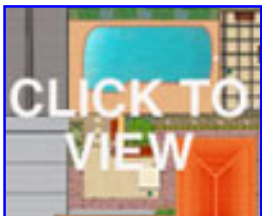
Datsun Passion



Mark Willoughby is a young man with an old head on his shoulders. A change in family circumstances left his mother, Connie, faced with the financial responsibility of raising her two boys and maintaining the mortgage. Mark at just 22 years of age made the heroic decision to sell his beloved car, which he had built from the ground up over the previous four years.

This generous effort has allowed the family to stay in their home and neighbourhood, but has created something of a burden for Mark himself. Quite apart from being heartbroken about losing his car, he has had to sacrifice the disposable income of a young, single guy and work hard to keep payments up on the family home.

Mark's girlfriend, Jessica, thought that he deserved a break and a good spot to work on his old car with his mates. Little did she know the lengths the Backyard Blitz team would go to to recognise the efforts of this great young Australian.



Design intent

Landscape designer Andrew Davies from dig design has created a garden inspired by Mark's love of his Datsun and Connie's need for a reflective zone. A tangerine coloured blade wall divides the two areas neatly whilst colourful plantings of a feature weeping mulberry and flowering perennials bring new life to this comfortable backyard. This small space has been converted from a boring patch of brown pavers to a stylish, relaxing garden space.

Design ideas

A bright coloured wall acts as a focal point as well as a visual divider between the active relaxation and the passive relaxation area. Blocks of colour are a very useful tool in the garden and be created with simple structures or swathes of mass planting.

Adapting this plan to your garden

Make a detailed scale drawing of your backyard (eg 1:100) showing the location of the house and major features then incorporate the desired elements from our makeover. As your garden will be a different size you will need to estimate the amounts of materials you will require.

Note: On your plan show the locations of any services (water pipes, sewerage, power, phone, etc) so you can avoid damaging them during the makeover.

Permits and approval: check with your local council regarding regulations about earthworks and drainage. If you are changing existing levels or installing drainage ensure no water run-off is directed toward neighbouring properties. Any water entering the storm water system must be free from debris and sediment.

Getting started

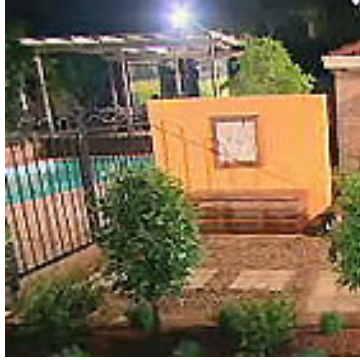
An old pergola, gas barbecue and tired old paving were removed before excavation commenced for the blade wall and new paving. Bulk materials were brought in by hand and the team got to work.



Garden

Retaining wall: Scott had to first build a new retaining wall to replace the crumbling brick wall that retained the existing pergola and paving. After removing the wall, treated pine posts (H4, 90x90mm) were installed vertically to support the treated pine sleeper wall and the pergola. Sleepers (200x75x2400mm) bolted horizontally to the posts with galvanised cup-head bolts and backfilled with blue metal and an agricultural pipe drain will retain the paving above.

Blitz Tipz: Ensure that all retaining walls have adequate drainage to prevent them failing.



Pergola: Scott built a great looking functional pergola to replace the existing, poorly constructed model. Treated pine posts (H4, 90x90mm) installed vertically in ground in concrete support beams (190x45mm) held in place with galvanized cup-head bolts (150x10mm). Rafters (140x45mm) skew nailed to the top of the bearers support battens (70x35mm).



Paving: Nigel lifted the tired old paving and laid large format sandstone pavers with a small unit paver surround to provide a level entertaining area. Large format sandstone pavers (400x400x35mm) from Sareensone add a touch of class and lightness to the courtyard and beneath the pergola.

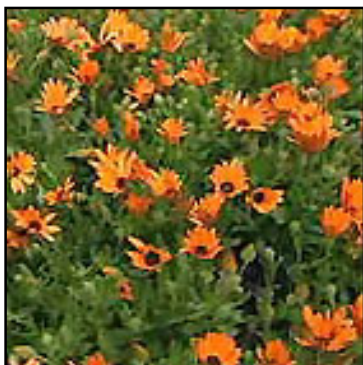
Blitz Tipz: If you have to lay two different types of pavers, try to match the thickness to make laying them as simple as possible.

Blade wall: Jamie built a great looking feature wall using a simple brick and mortar footing and some lightweight Hebel blocks. A level footing laid wider and longer than the wall was created by laying bricks into a trench filled with mortar. The first course of Hebel blocks (600x200x200mm) was laid level on a bed of 3:1 sand and cement mortar. Remaining courses were laid using a thin bed adhesive from Hebel. Adhesive is scraped on about 3mm thick with a toothed trowel and the next course of blocks laid in place. Excess adhesive was removed with a trowel before it set and a 3:1 sand and cement mortar mix was applied in a circular fashion with sponges to the surface of the wall. Painted with an exterior acrylic, the whole wall has become a feature and a useful dividing tool in the garden that adds interest and an element of privacy.

Blitz Tipz: Ensure your footing is wide enough to provide stability to the block work above it. If you are laying concrete blocks or brickwork a reinforced concrete footing is necessary.

Garden beds: Jody added an organic garden mix to improve the existing site soil. The organic matter will improve the water holding capacity of the soil and improve aeration, which in turn will promote good root development. An organic Eucalyptus mulch adds a dark colour as a backdrop to the colourful choice of plants and prevents weed regrowth.

Blitz Tipz: Ensure that neither soils nor mulch lie directly against the stem or trunk of plants.



Plants

Trees: weeping mulberry (*Morus nigra*)

Shrubs: parrot bush (*Polygala 'Grandiflora'*)

Perennials: Italian lavender (*Lavandula 'Major'*), African daisy (*Osteospermum 'Orange Symphony'*), blue-eyed grass (*Sisyrinchium 'Devon Skies'*), pincushion flower (*Scabiosa 'Butterfly Blue'*)

Climber: potato vine (*Solanum jasminoides*)



Cost and availability

We used mature plants in our makeover to create an instant effect for television. As a result, our total cost for plants and materials was \$11,523. The use of smaller plants would have reduced the cost to \$10,070.

Product details

- Hebel blocks are available from most large hardware retailers. Alternatively call CSR Hebel on 1300 369 448 for your nearest stockist.
- Sareen Stone 'Golden Palimo' pavers accost \$112 per square metre. Phone (02) 9736 1833 for more details on their large range of tiles and pavers.
- Most of the plants we used are readily available at, or can be ordered from, nurseries. Nurseries can also advise on similar varieties suited to your area. You may need to contact specialist nurseries for some plants. Your local nursery should be able to provide you with contacts.
- Most other materials are available from large hardware stores or building or landscape suppliers.
- All tools used are commonly available for hire, including the mini loader and the nail gun.



Getaway details

Harrigan's Irish Pub
Broke Rd
Pokolbin NSW
Phone: 1800 800 522
Web: www.hvg.com.au

Extremedriving.net
Phone: 1800 648 846
Email: info@extremedriving.net
Web: www.extremedriving.net



Rover Coaches
231 - 233 Vincent Street
Cessnock NSW
Phone: (02) 4990 1699
Toll Free: 1800 801 012
Web: www.rovercoaches.com.au

Acknowledgements

Design by dig design
Andrew Davies
dig • design • ideas • gardens
Phone: (02) 9416 6022
Email: admin@iconext.com.au



Construction by the Backyard Blitz team (all gardens are gifts from Backyard Blitz).

© CTC Productions 20 2004

For more Step by Step Constructions click [here](#)



