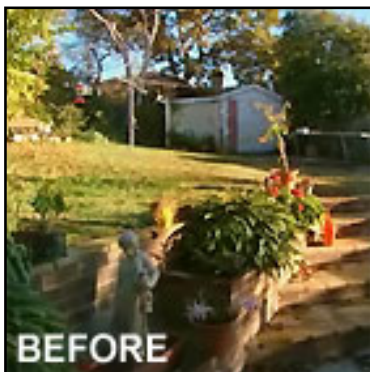


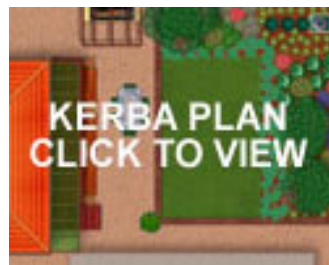
BACKYARD BLITZ

Battle of the Kids



Blitz throws out the rule book, and 2 families will never be the same again!

Meet the neighbours! With a pair of blitz “experts” in each camp, the Kerba and Grimm families kit up and get stuck into their backyards... faced with skill tests, bad weather and dissension in the ranks, it’s an all out effort to get these gardens over the line. No holidays here! But for the winning garden, a trip to Hawaii is up for grabs!



Kerba garden

Our designer, Peter Bachak of Osmosis Design, spoke to the children and parents about their needs and the feel they wanted in the garden. This led to a modern, contemporary design with a Mediterranean influence. The Kerba family needed an entertaining space that was flexible – sometimes for a large extended family and friends and sometimes for only a few, and the spit, a central feature of their entertaining, needed to be considered. Sometimes the spit needs to be moved to other locations and so the new plinth allows for this, and the bench seats were designed also to be movable. The backyard was not symmetrical and so it was decided to use a contemporary shape and layout with Mediterranean furnishings eg. tiles, urns etc and plants.



Grimm garden

Jamie consulted the family and decided they needed to enlarge their entertaining area to allow for an extended family of up to 30 people in a comfortable outdoor room. To achieve this the Grimm family transformed the existing retaining walls into banquet seating and the concrete slab floor into a timber deck or floor and painted the walls with a render style paint. Jamie designed a water feature to cascade in a rill to a pond to give a relaxed ambience to this outdoor room. The planting provides a lush green wall to the amphitheatre of the outdoor room.

Adapting these plans to your garden

Make a detailed scale drawing of your backyard (eg 1:100) showing the location of the house and major features then incorporate the desired elements from our makeover. As your garden will be a different size you will need to estimate the amounts of materials you will require.

Note: On your plan show the locations of any services (water pipes, sewerage, power, phone, etc) so you can avoid damaging them during the makeover.

Permits and approval: check with your local council regarding regulations about earthworks and drainage. If you are changing existing levels or installing drainage ensure no water run-off is directed toward neighbouring properties. Any water entering the storm water system must be free from debris and sediment.

Team Kerba's garden

Jody and Scottie and the Kerba family cleared the yard and retrieved pavers from a side passage and increased the paved area in front of the verandah by one metre giving a wide enough area for table and chairs.

We also repaired sunken and broken pavers. We lifted the header course on the existing pavers and dug down 260mm and put in 200mm compacted roadbase and then we screeded with paving sand and laid the pavers. We made sure the decorative header course was mortared into place to stop any movement.

Timber tiled screen: Team Kerba used Linkedge aluminium edging to separate garden from turf area. Our design included an L-shaped frame in the corner of the bottom of the yard, and to achieve this Scottie concreted five posts 90x90mm treated pine in ground. Then he framed with 90x45mm beams so that we could attach blueboard, 3m x 1200mm on one face and 1m x 1200mm on the other. At this point we attached a piece of straight timber using a level to the bottom of the blue board. We did this so that we could start our first row of tiles and the timber would hold this first row in place. The tiles were attached with an exterior flexible tiling adhesive.

In front of this tiled screen we excavated an area to house our fibreglass pond. We levelled this area with paving sand and installed in a fibreglass 900x900x900mm pond. In the pond we placed a ceramic pot and a pump for recycling water from the overflowing pot into the pond.



Balustrade: Scottie and team Kerba attached a 70x35mm batten to all upright metal posts of the balustrade with 50mm wing tip tech screws. We then horizontally attached Swan River Red (Boral) decking timber, 86x19mm alternating with 64x19mm, to the battens.

Scottie then set out the post position for a new pergola in our spit area and we concreted in 600mm long stirrups. We left this overnight to cure and then attached 90x90mm hardwood posts to the stirrups and 190x45mm roof beams around the perimeter of the posts to support two rafters. At the rear of this structure we attached a blueboard sheet 2.7m x 1200mm and tiled this surface in the same manner as our screen at the bottom of the garden.

As the existing spit was not at a good working height we decided to build a plinth and raise the spit to be at a more comfortable work height. We did this by using Hebel block 600x200x200mm and raising two courses (400mm). We paid special attention to the first course with our mortar bed so that we could get the correct level as the pavers were on a slight fall. We joined all hebel blocks with a mortar mix 4:1. We then bagged the blocks with the same mortar mix with added water for our finished effect.

We painted the garage and outbuildings for improved appearance. We also painted the fence in a deep charcoal blue to contrast with our plants. We mass planted under the existing mandarin tree.

Scottie built a number of frames to be used as movable box seating. We did this by making a frame with 90x45mm treated pine and then attaching decking boards (90x19mm alternating with 70x19mm).

Team Kerba Plant List

Oyster plant (*Acanthus mollis*), kurume azalea, bougainvillea (*Bougainvillea cv*), butterfly iris (*Diets grandiflora*), escallonia (*Escallonia 'Pink Pixie'*), gardenia (*Gardenia 'Florida'*), creeping juniper (*Juniperus 'Blue Rug'*), skyrocket juniper (*Juniperus 'Skyrocket'*), blue statice (*Limonium perezii*), cycad (*Cycas revoluta*), dwarf oleander (*Nerium cv*)

Team Grimm's garden

Jamie and Nigel and team Grimm cleared the area and removed the existing capping from the brick retaining walls.

Deck over concrete slab: Team Grimm laid 90x45mm treated pine joists at 450mm centres dynabolted into the existing concrete. We used a laser level and packers to make sure the joists were level. We laid 19x68mm spotted gum decking using galvanised cuphead screws.

To create seating area: Team Grimm dynabolted 90x45mm treated pine bearers to the tops of the terraced retaining walls and then laid 90x45mm treated pine joists across the bearers and then attached 19x68mm spotted gum decking boards to form the seating area.



The water feature: Using three pieces of channel drain Jamie and the team created a cascading water feature by laying the channel on three different levels. Acqua bisazza tiles were then glued and grouted in the channel. The water trickled down a wall and into the existing reservoir which had three coats of water proofing membrane. The wall face was clad with vanilla split stone marble. We applied three coats of a waterproofing membrane to the reservoir.

We painted the walls with Dulux Full Cover Texture which is a roll on texture product designed to revive old brick walls and turn them into a contemporary smooth render texture finish.

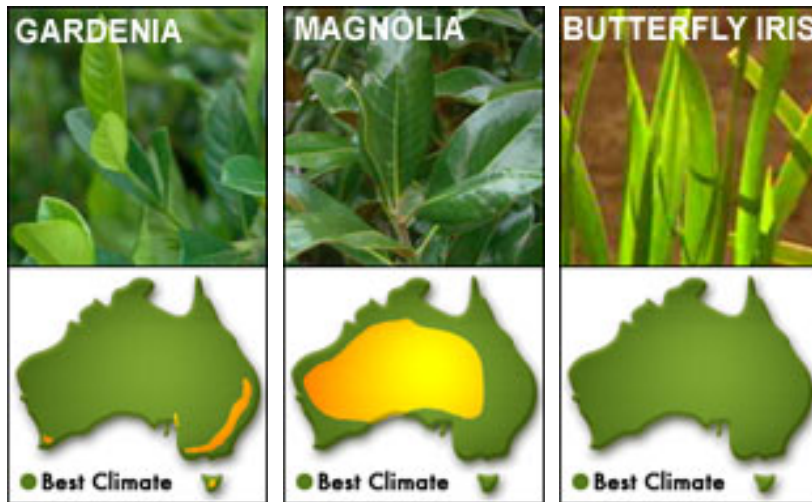
To enclose the outdoor dining area Jamie selected a range of plants to enclose and provide an attractive backdrop for the outdoor entertaining area.

Team Grimm Plant List

Sweet viburnum (*Viburnum odoratissimum*), sticky hop bush (*Dodonaea viscosa* 'Purpurea'), gordonia (*Gordonia* 'Silk Screen'), japanese box (*Buxus microphylla* var. *japonica*), gardenia (*Gardenia augusta* 'Florida'), pittosporum (*Pittosporum* 'Miss Muffett'), evergreen

magnolia (*Magnolia grandiflora* 'Exmouth'), crabapple (*Malus* 'Gorgeous'), port wine magnolia (*Michelia figo*), indian hawthorn (*Rhaphiolepis* 'Apple Blossom'), grevillea (*Grevillea* 'Bronze Rambler'), creeping boobialla (*Myoporum* 'Lime Carpet')

Plants



Product Details

- Most of the plants we used are readily available at, or can be ordered from, nurseries. Nurseries can also advise on similar varieties suited to your area. You may need to contact specialist nurseries for some plants. Your local nursery should be able to provide you with contacts.
- Most other materials are available from large hardware stores or building or landscape suppliers.
- All tools used are commonly available for hire, including the mini loader and the nail gun.
- Hardwood decking supplied by Boral Timber, phone 1800 818 317 or visit www.boral.com.au
- Tiles, from The Art of Tiles, 449 King Street, Newtown NSW, phone (02) 9565 1066 or visit www.artoftiles.com.au
- Jody and Scottie's fibreglass pond shell from Contour Ponds and Pumps
- LINKedge garden and paving edging. For stockists phone (08) 8347 4447 or visit www.linkplus.com.au
- Dulux Full Cover Texture paint available nationally. Visit www.dulux.com.au.

The Grimm's Budget		The Kerba's Budget	
Plants	\$4038	Plants	\$3925
Timber	\$3018	Timber	\$3350
Misc	\$3850	Misc	\$3633
Total	\$10,906	Total	\$10,908

The Kerba and Grimm parents visited the spa at:

Observatory Hotel
 89-113 Kent Street
 Sydney NSW 2000
 Phone: (02) 9256 2222
 Fax: (02) 9256 2233
 Web: www.observatoryhotel.com.au

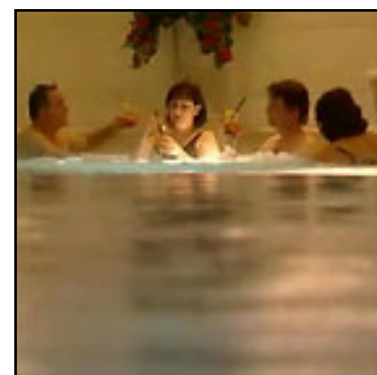
The Boathouse on Blackwattle Bay
 Ferry Road
 Glebe Sydney NSW 2037
 Phone: (02) 9518 9011
 Fax: (02) 9518 9098
 Email: fish@boathouse.net.au
 Web: www.boathouse.net.au

Acknowledgements

We would like to thank Boral Timber for their kind donation to the Kerba and Grimm families

Design by:
 Team Kerba:
 Osmosis Design
 Phone: (02) 9344 4154
 Web: www.osmosisgardens.com.au

Team Grimm:
 Patio Landscape Architects



Phone: (02) 9026 7400
Web: www.patio.com.au

Construction by the Backyard Blitz team (all gardens are gifts from Backyard Blitz).



© CTC Productions 14 2006

For more Step by Step Constructions click [here](#)

