

Burke's BACKYARD

garden fact sheet

APRIL 2010

30
DAYS
of home &
entertaining

The Burke's Backyard Display Garden has been built specifically for the 30 Days of Home and Entertaining event. The garden showcases many interesting elements and ideas that we hope will provide inspiration for your own backyard or balcony. The garden is enclosed and private. It has a raised deck and paved areas, perfect for walking or sitting on. It incorporates a chicken coop, a grove of olives and two raised vegetable beds, making it a wonderful place to relax and entertain in, as well as providing food for the family. The lavenders and magnolias are also beautifully perfumed, creating an even more relaxing, heavenly garden.



The Mediterranean plants

MANY OF THE PLANTS IN THE GARDEN come from the Mediterranean region – in particular, the lavenders, figs and olives. All of these plants (and many others from the Mediterranean region) all like the same conditions with a hot, dry summer and a cool, wet winter. They grow both at the coast and well inland from sea level to about 1500m up, but always in plenty of sunshine and always on gravelly, sandy or rocky soils that drain fast. At your place, give them full sun. If your soil isn't sandy, plant them on sloping ground or on low, wide, gently sloping mounds of sandy or gravelly soil to allow excess water to drain. All of these plants like garden lime or dolomite lime blended through the soil around them. Do this at planting time and once every year or so after that. A handful spread thinly around each plant will do the trick.

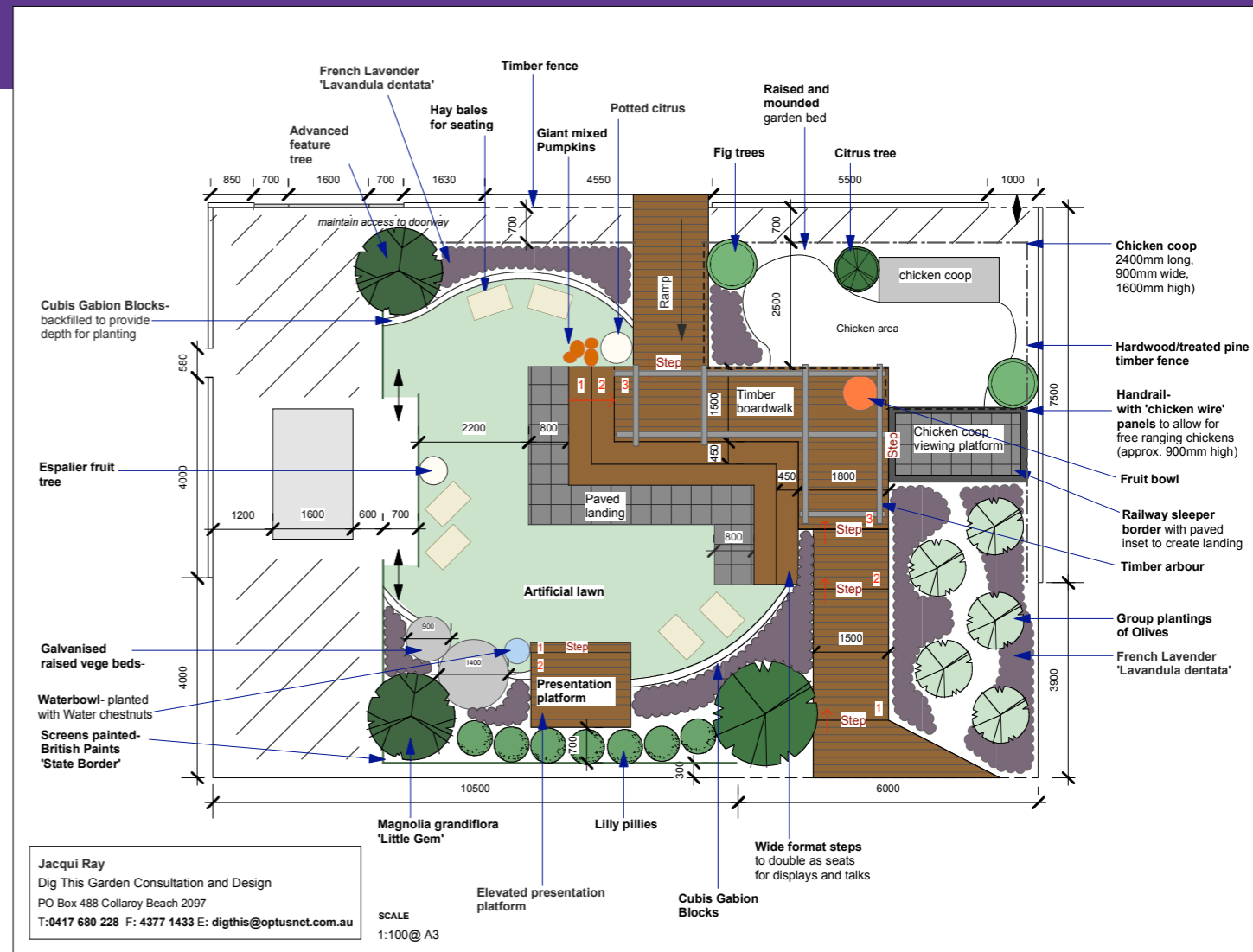
FIG TIP: if you want to harvest your figs, fig trees must be covered with netting to protect the ripening fruit from birds, possums and flying foxes. The trees produce two crops a year, in autumn and spring. For maximum sweetness, pick the fruit when it is full-size, and has started to split at the bottom.

OLIVE TIP: some olive varieties are grown to produce olive oil, and others are grown for the table. Olives are ready for harvest in autumn. Pick them when they are full-sized, but before the skin has started to soften. Because there is so much to learn about growing and curing olives, we recommend buying a book and reading up on the subject before you choose your varieties and plant your trees. A good variety for the backyard for eating is the 'Kalamata' olive.

Screening and feature plants

WE HAVE USED LILLY PILLIES TO SCREEN the garden along one side. Lilly pillies make great privacy plants and are available in a large range of sizes. Our recommendations are: 'Hot Flush' (Acmena smithii) which grows up to 3m, 'Little Gem' (Syzygium francisii) grows to 2-3m and 'Select Form' (Syzygium australe) grows up to 3-4m. These varieties also do not get lilly pilli psyllids, which is an ugly leaf-pimpling condition that many other lilly pilli varieties are prone to.

WE HAVE USED A FEW LARGE POTS of Magnolia grandiflora 'Little Gem' as a feature. This is a wonderful evergreen magnolia with gorgeous white, fragrant flowers. It reaches a height of around 4-8m. The foliage is particularly attractive with a glossy, deep green top to the leaves with a furry brown underside. The leaves and branches of this tree are very popular with florists.



Fruit and vegetables

WE HAVE PUT A FEW DIFFERENT CITRUS TREES in the garden. Some are kaffir limes which look great and do well in pots, and you can make wonderful Thai dishes using the leaves. Others are espaliered lemons. Espalier means a plant that has been trained to grow flat along a trellis or framework. This process of training a plant (in this case a lemon) to grow flat along a trellis or lattice is easy to do and allows you to turn a three-dimensional plant into a flat screen so you can use it in a small space, as a screen or a dividing wall between different sections of your garden. So long as the citrus has full sun all day and is fertilised at the appropriate times it will thrive and fruit well.

TO ESPALIER A PLANT, pick one that already has a few flat branches. Plant or pot it beside the lattice or screen you wish to attach it to. Snip off any branches that are growing forward (away from the lattice) and attach the side branches to the lattice using plant-tying materials or clips which are available from nurseries. As new branches grow clip them back and within a short time you'll have an espaliered tree!

THE VEGETABLES we have planted are in corrugated steel raised beds. These are perfect for people who are in rental or small properties or for people who are unable to bend down to reach a low vegie patch. We have planted the vegies in a mix of horse manure and an organic soil mix. Ideal vegies for growing in tanks like this include lettuce, herbs, tomatoes and cabbages.

The chicken coop

WE HAVE USED A COOP that would be perfect for a small or medium backyard. The chooks inside are Chinese Silkie hens. Silkies are gorgeous, fluffy-looking chooks. They are really placid and so are great with kids. They lay a fair number of eggs, approx 100 per Silkie per year. Hens lay more eggs in the first 2-3 years of their lives and then their egg production drops off as they age. There are many chook clubs around Australia that you can join or contact to get information on different breeds from. These chook clubs are a lot of fun and you can learn a great deal from their friendly experts and breeders. Chooks make great pets and are quite easy to care for. However it is important that your coop be fox-proof and dog-proof. Chooks are easy to feed and will also eat kitchen scraps, turning it into wonderful chook poo that you can use on your garden.

Other elements

OUR GARDEN CONTAINS MANY other great elements such as furniture, artificial lawn, an umbrella, paint and much more. Please see our list of 'where do you get it' on the following page to find out more.

coriander chicken skewers

Preparation time: 30 minutes + 30 minutes marinating

Cooking time: about 6 minutes

Makes: 20

- 1/2 bunch coriander
- 1 lime, rind finely grated, juiced
- 2 tablespoons sweet chilli sauce
- 1 tablespoon fish sauce
- 2 tablespoons peanut oil
- 800g chicken breast fillets

1. Cut the coriander to separate the leafy top section from the stems and roots. Wash the roots, then roughly chop the roots and stems, reserving the leaves.

2. Combine the coriander stems and roots, lime rind and juice, sauces and oil in a small food processor or blender. Process until almost smooth, and pour into a shallow, non-metallic dish.

3. Trim the chicken and cut diagonally across the grain into 5mm wide strips. Add to the marinade and toss to combine. Cover and refrigerate for 30 minutes. Meanwhile, soak twenty 16cm bamboo skewers in cold water for 20 minutes.

4. Thread the chicken onto the skewers. Cook on a hot barbecue or char-grill for 2-3 minutes each side, until golden brown and cooked through. Serve sprinkled with finely chopped coriander leaves.



where do you get it



Garden pavers

Newstone Terrain Nero, shown in 400 x 400 x 40mm (also available in Panorama, 600 x 400 x 40mm), are concrete pavers available exclusively at Amber Tiles; www.ambertiles.com.au or call 1300 362 241.

Paver supports

VersiPave by Elmich are adjustable paver supports that allow the easy placement of paving slabs on roofs, plaza decks, balconies and other areas where a well-drained and level surface is required. VersiPave significantly reduces paving slab installation costs and provides greater design flexibility. Elmich's VersiPave is available at Amber Tiles.

For more information visit ambertiles.com.au or call 1300 362 241.

Whether you are renovating or building your home; whatever the inspiration, Amber has the answer.



Garden furniture

The Cotswold 4 Piece Wicker & Aluminium Garden Setting and San Remo Cantilever Umbrella were provided by Shelta Australia.

Shelta Australia is the largest importer of quality wicker and aluminium outdoor furniture in Australia. Our range is comprehensive - from cafe sets, to large wicker outdoor furniture deep seat multi settings, modulars, dining settings, bar settings etc. Shelta is also the pre-eminent supplier of outdoor shade products - both cantilever (side post) umbrellas and centre post, and a wide range of beach umbrellas and Sheltas.

Shelta is entering our Centenary year in 2010, and after nearly 100 years remains proudly Australian family owned. We place great emphasis in surpassing our customers expectations for quality of product and service. www.shelta.com.au or call (02) 8863 0400



Decking

Timberlast Decking by Hunter Building Products.

www.hunterbuildingproducts.com.au

Timberlast Decking is environmentally friendly from recycled HDPE and wood fibre. No maintenance, no rot, no oiling and slip-resistant. For sales enquiries contact us directly: Phone (03) 5277 0555 or 0417 591 113 or email huntersales@netspace.net.au



Artificial lawn

The artificial lawn was provided by Keeping it Green, who supply 100% Australian designed and made synthetic grass. The ideal lifestyle solution. The type of turf used was Ideal Ultimate, a thick and luxurious, hard-wearing, high-traffic grass, perfect for many garden situations.

Visit the website at www.keepingitgreen.com.au or email info@keepingitgreen.com.au or phone (02) 6242 0260. Or visit www.prograss.com.au phone (07) 4041 7433.



Raised vegetable beds

The tanks used as raised garden beds were provided by Tankworks Australia. Manufacturing Australian-made tanks since 1934, they offer made-to-measure tanks for garden beds or water tanks in a large range of colours. For more information visit www.tankworks.com.au or call 1300 736 562.



Paint

The paint was provided by Inspirations Paint and Colour. Colours used were: Berger Premium in: 'Forgotten Olive' Dulux: 'Greek Lavender' & Dulux Colorbond: 'Woodland Grey', Contact Inspirations Paint and Colour by phone at 1300 INSPIRE (1300 467 747) or visit www.InspirationsPaint.com.au To create a look you'll love come to the paint store where colour clicks!



Stone retaining walls

Cubis Gabion Bricks were supplied by Think Outside Pty Ltd. An easy alternative for retaining walls, garden edging, surrounds, even furniture!

Think Outside Pty Ltd: phone (02) 8824 4488, fax (02) 8824 4489, website www.thinkoutside.biz email sales@thinkoutside.biz



Cushion fabric

The striped fabric on the garden cushions is Hoad Messina in the 'Amethyst' colourway, \$29.50 per metre from Hoad Fabrics. For stockists please contact

Hoad Fabrics toll free on 1800 812 538 or email sales@hoad.com.au or visit the website at www.hoad.com.au



Chicken coop

The Penthouse chicken coop was provided by Planet Poultry, who have a complete range of chicken coops and much more. They're your one-stop poultry shop. Chickens in your backyard made easy.

Visit the website at www.planetpoultry.com or call Norm on 0407 786 928 or email norm@planetpoultry.com

Chickens

The Chinese Silky Hens were provided by Robyn Anderson of the Rare Poultry Breeders Association; phone (02) 4953 2882. For more information on rare breeds www.backyardpoultry.com.au has a directory of breeders and clubs throughout Australia and New Zealand. 'Australasian Poultry Magazine' is also a brilliant read and has contact details for breeders and clubs Australia-wide. You can also try: www.freewebs.com/silkieclubofaustralia. And The Bantam Club of NSW, phone 0411 587 578, are also a good bunch.



Garden mix

Amgrow Black Label Garden Mix provided by Amgrow. Amgrow is one of Australia's largest manufacturers of home garden products. Amgrow products are distributed to garden centres, hardware outlets, variety stores and supermarkets across Australia. Amgrow, because your plants deserve the best. www.amgrow.com.au



Pots

Many of the pots in the garden were supplied by Yardware. Importers and retailers of exclusive indoor and outdoor designer furniture, including bronze pieces, ironwork, water features and garden objects. The Design Establishment and Yardware work together to provide fine furniture and accessories.

www.yardware.com.au ph: Surry Hills: (02) 8353 3888, Dural: (02) 9651 7807, Alexandria Head Office & Warehouse: (02) 9310 2666



Water chestnuts and taros

These were provided by Daleys Fruit Tree Nursery. Daleys Nursery is an Australian-owned and operated nursery that supplies wholesale and retail customers. They have a huge online nursery where you will find the most exotic fruit trees and rainforest plants in Australia.

Visit the website at www.daleysfruit.com.au or phone (02) 66 321 441.



Large tree transport

The large tree transport was provided by Alpine Treemovals. Alpine Treemovals specialises in large container trees and mature in-ground specimens as well as up to 10-metre tall ex-ground mature specimens. Also, they offer mature tree transplant and relocation including removal and careful agistment and maintenance of specimen trees required to be replanted in situ. Visit the website at www.treemovals.com.au phone (02) 9652 0300 or email sales@treemovals.com.au

Fig trees

The fig trees were provided by Gebran Azzi. Gebran sells fig trees, including mature 3-4 year old trees, and fig fruit when in season. For more information visit www.figlicious.com.au or phone 0416 093 293.



Barbeque

BBQ supplied by Everdure. Everdure barbecues now feature patented internal lighting under the hood so you can see what you're cooking in a whole new light. It's a world first from one of Australia's favourite names in barbecues. Phone: 1300 766 066 Visit: www.everdure.com